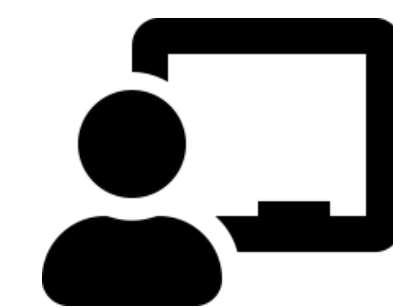
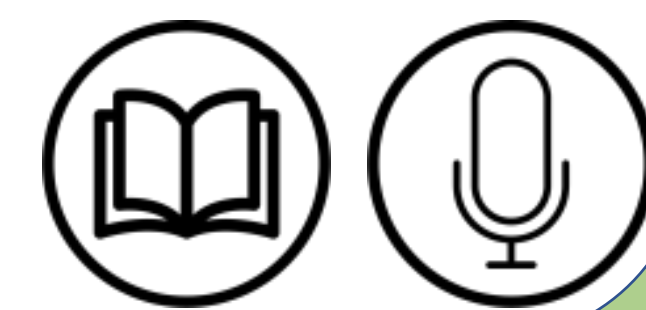


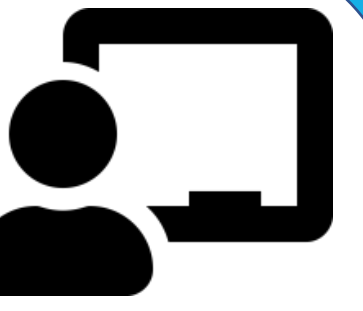
Measurement of Weight

(Customary units)



What are the Customary units of weight ?





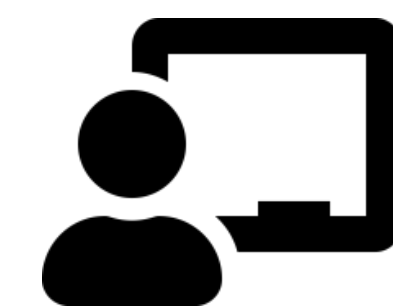
_____ is the Smallest Measurement of
Weight .



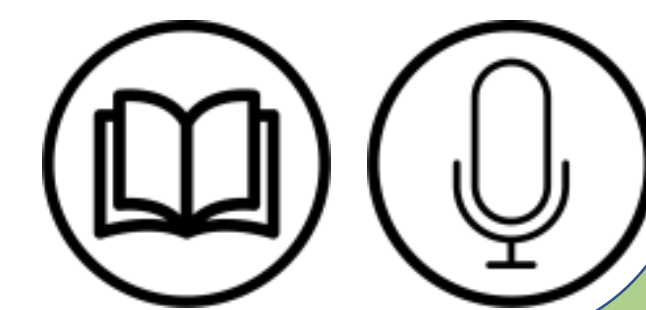


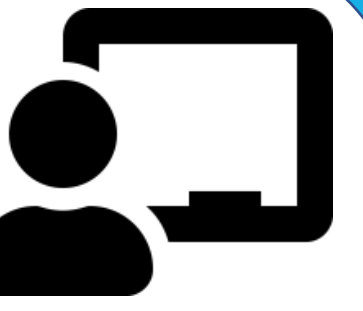
_____ is the Largest Measurement of
Weight .





1 pound = _____ Ounces

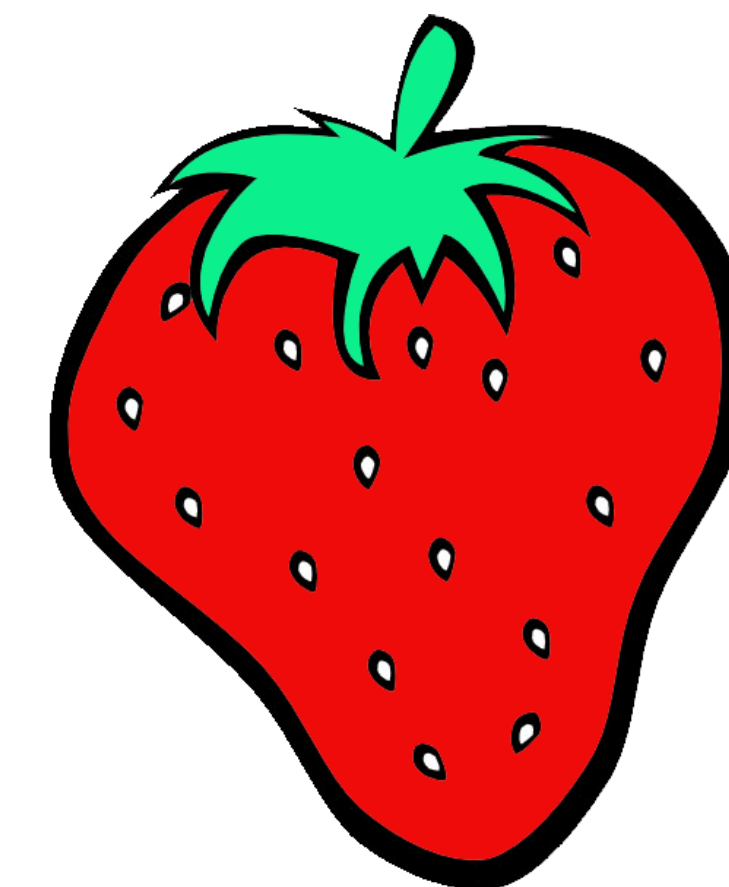
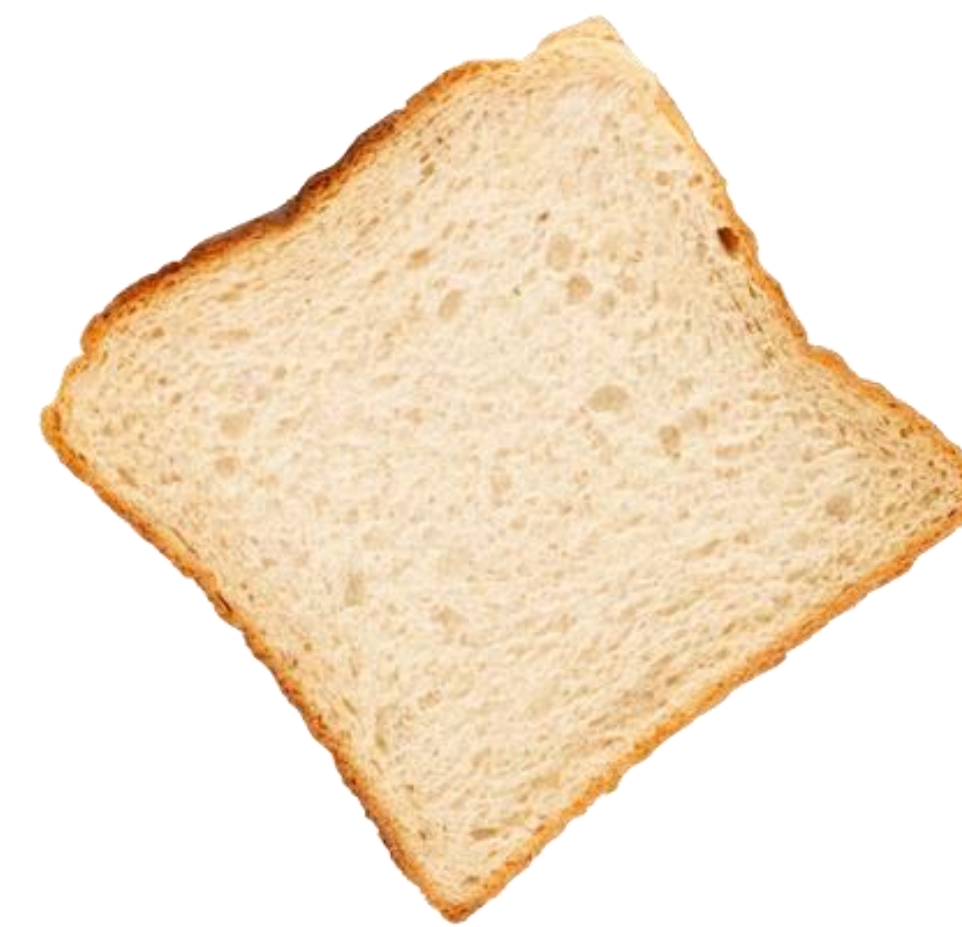
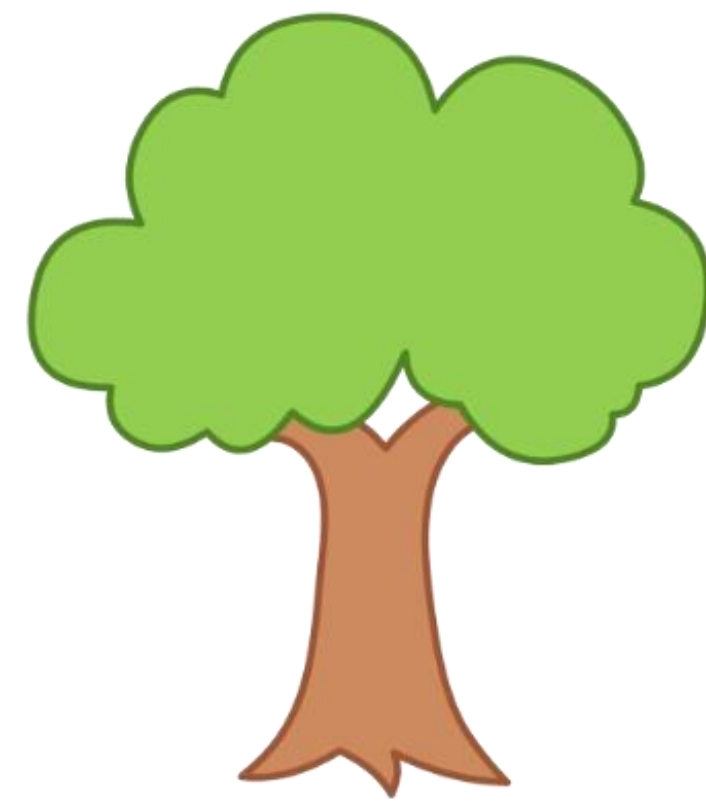
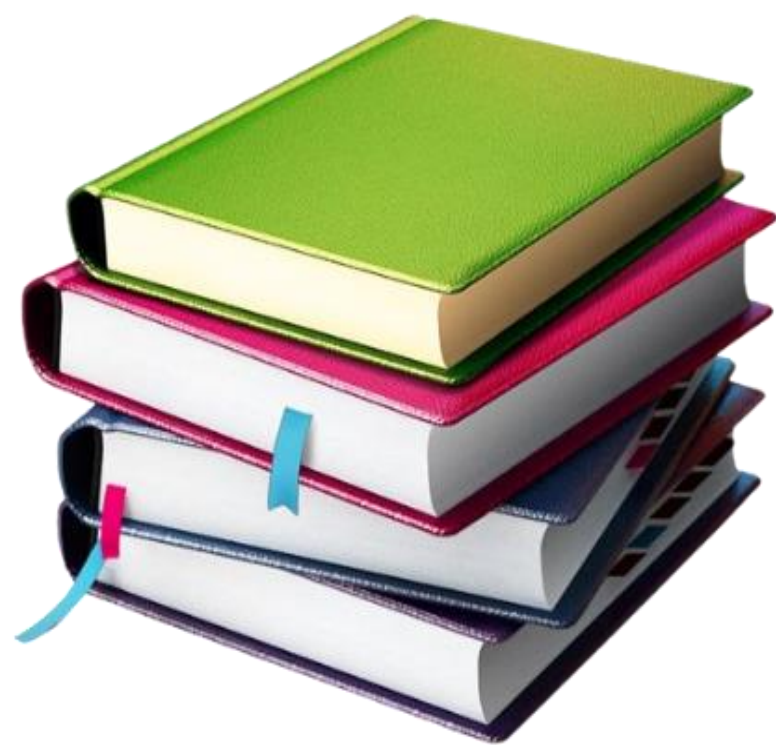




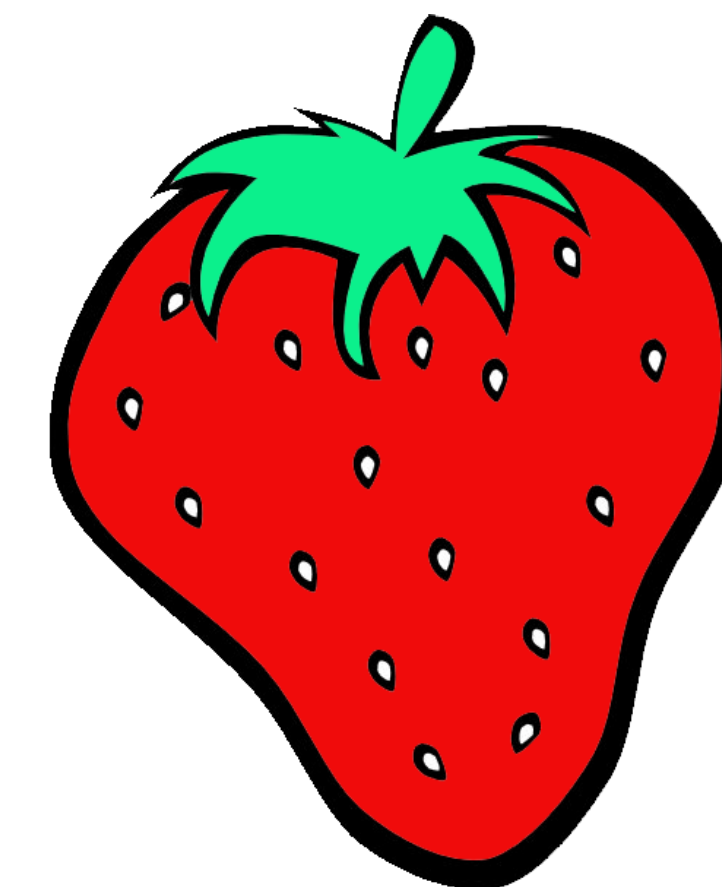
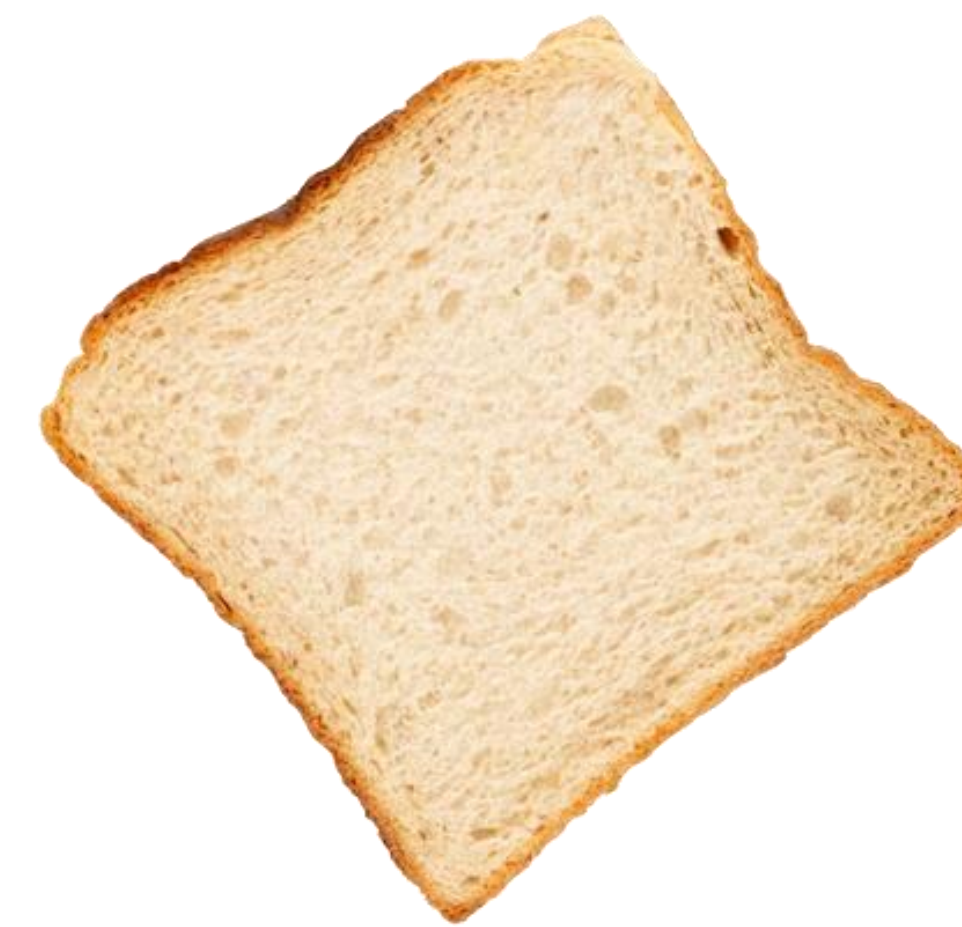
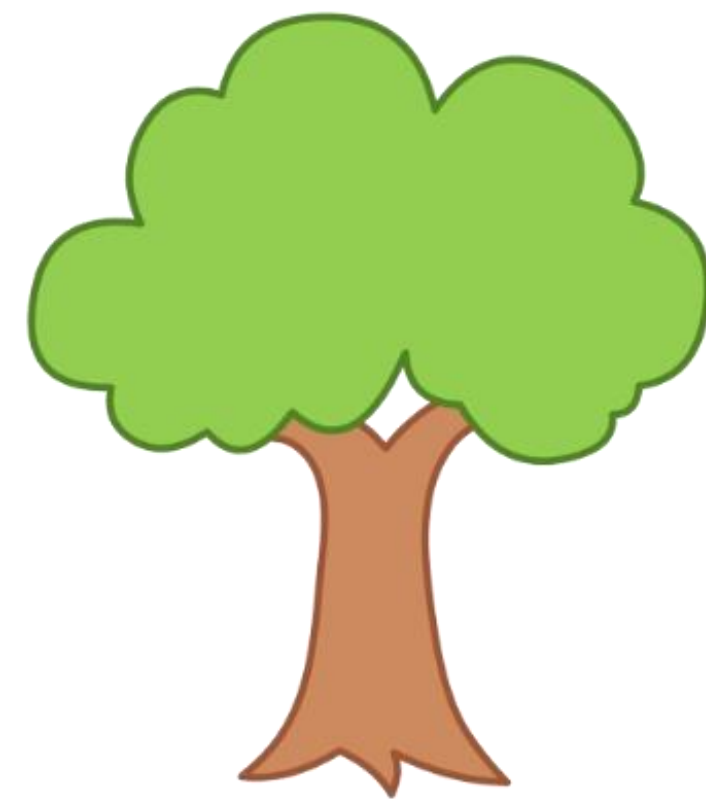
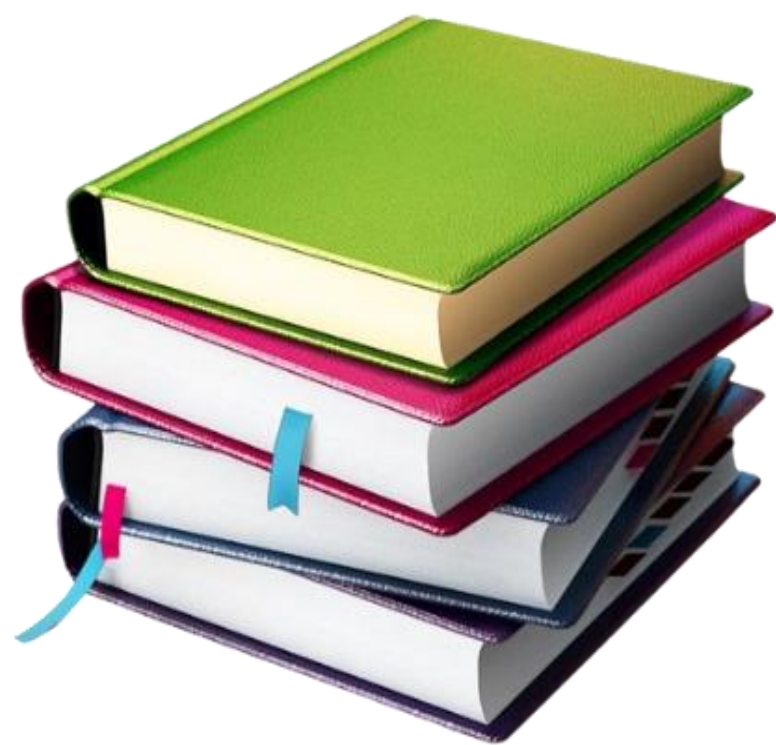
1 Ton = _____ Pounds



Circle the Examples Ounces



Circle the Examples Pounds



Circle the Examples Ton

